

EasyOne™ Test Modes and Parameters

FVC test:		FVL test (add. to FVC):	SVC test:	MVV test:
FVC	MEF25 (FEF75)	FVC	VCmax	MVV
FEV1	MEF50 (FEF50)	PIF	VCin	BPM
FEV3	MEF75 (FEF25)	MIF25 (FIF75)	VCex	
FEV6	MEF25-75 (FEF75-25)	MIF50 (FIF50)	IC	
FEV1/FVC	PEF	MIF75 (FIF25)	ERV	
FEV1/FEV6	Tzero		IRV	
FEV/VC	BEV		VT	
FEV1var	EOTV		Rf	
FEV6var	PEFT			
FVCvar	FET			

Specification and Technical Data

Dimension:	83 x 158 x 43 mm
Weight	245 g
Measuring accuracy	Volume: ± 2% or 0.050 l Flow: ± 2% or 0.020 l/s PEF: ± 5% or 0.200 l/s MVV: ± 5% or 5 l/min
Resolution:	Volume: > 1 ml Flow: 4 ml/s
Measuring range:	Volume: ± 12 l Flow ± 16 l/s
Resistance:	approx. 0.3 cm H ₂ O/l/s
Display:	64 x 160 pixel graphic display
Data entry:	14-key keyboard
Power supply:	(2) AA batteries
Battery service life:	400 tests approx.
Data memory:	700 tests approx.

Print out:	direct to printer or via PC, plain paper A4
Data communication:	direct: printer, modem-telephone, e-mail. With EasyWare to PC and beyond
Languages:	English, German, French, Italian, Spanish, Portuguese, Polish, Japanese, Norwegian, Finnish, Danish, Greek, Swedish, Dutch. Other languages on demand
Predicted values:	ERS (ECCS), Roca, Austria, NHANES III, Knudson 1976, Knudson 1983, Crapo, Morris, Cherniak, Berglund, Gulsvik, Hedenstroem, Asia 1-4, JRS2001, Gore, Pereira, Finnish. Paediatrics: Zapletal, Dockery, Hsu, Hibbert

ndd advantage: (nnd true flow)

- no sensor in contact with sample
- no influence of humidity, barometric pressure, contamination
- no calibration
- no cleaning, no maintenance
- simple and economic consumables
- easy to operate outside lab with operator prompts and diagnostics
- extremely high accuracy for low flows
- no down time

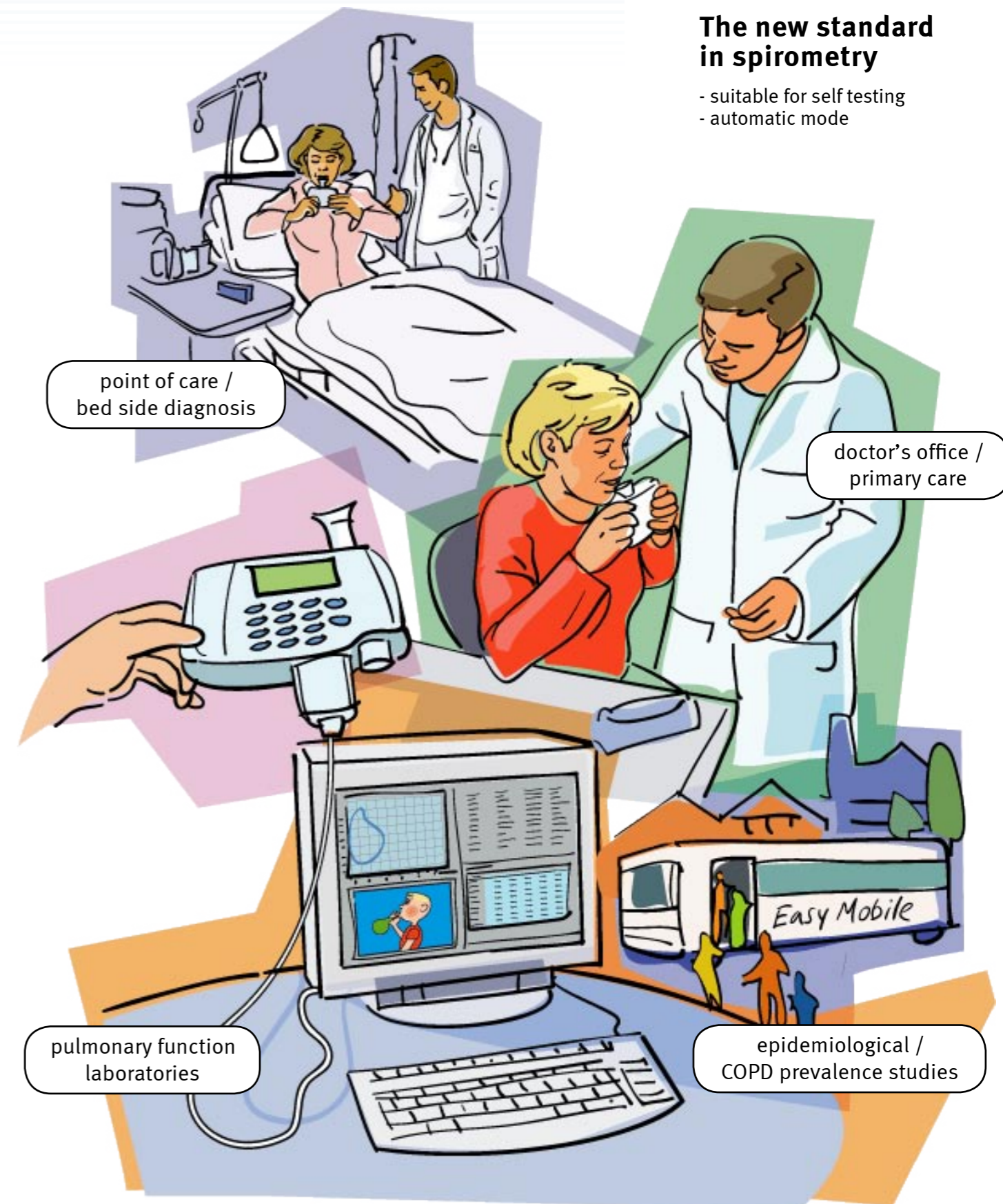
all competitors:

- (turbine, Fleisch, pneumotach, heated wire)
- sensor always in contact with sample
 - extremely sensitive to contamination (measuring errors)
 - regular calibration needed
 - need for cleaning
 - need for filters
 - difficult to operate outside labs
 - limited low flow detection
 - down time for maintenance

n d d
EasyOne

**The new standard
in spirometry**

- suitable for self testing
- automatic mode



n d d

nnd Medizintechnik AG
Technoparkstrasse 1
CH-8005 Zurich, Switzerland
www.ndd.ch

OTG

Occupational Testing Group, Inc.

253 Spring Street - Richfield, NC 28137
Phone: 704-463-4432 / 704-463-4433
Email: info@otgroup.us - Website: www.otgroup.us

The ndd true flow technology

- sensor is never in contact with the sample
- ndd true flow is absolute flow (no influence by contamination, humidity, droplets, temperature)
- ndd true flow is also used by major OEM manufacturers (Ventilators, Anesthesia, Spirometers etc.)



CE
0120

Endorsed, worldwide proven

- by NASA, MIR space programs in use for crew monitoring in outer space
- ATS, ERS, CSA, JAPAN, FDA, CE, NIOSH, OSHA, GOLD, BOLD, Platino
- drug makers for clinical and marketing studies
- major Asthma / COPD drug companies
- top references in USA, EU, Japan, Asia, Australasia, Latin America

Keypad

- alpha numeric
- data entry like cell phone

Cradle (base station)

- for standby positioning of the *EasyOne™*
- for communication from the *EasyOne™* :
 - directly to printer, serial or USB
 - to PC (by the *EasyWare™* software)
 - to modem / telephone (studies, home use etc.)
 - direct encrypted e-mail transmission



EasyOne Screen™

- for connection of the *EasyOne Screen™* to a PC
- direct real time FV and FT curve
 - reject / accept feature
 - children incentive screen

The display

- 5 lines with ample space for clear communication
- used for guidance to achieve high grade tests
- gives instant results and diagnosis



Lowest running costs

- different consumable options; single use and reusable spirettes to match the user's priority
- no costly calibration nor any other maintenance
- no down time



spirette™

- the best docking for adults and children
- hygienic single patient consumable for full contamination control



Vast memory

- up to 700 patients (first in first out)
- secured memory, no accidental loss when battery low
- multiple units may be used with one cradle and one *EasyWare™* PC software



Report

- plain paper A4 or letter size
- in colors with clear and lasting print
- ready to be filed and stored
- direct USB connection to printer
- export to 'word', 'excel' etc.



Battery powered

- 2 AA standard batteries last for approximately 400 tests
- no need for re-charging, no down time
- works everywhere, any time

Actual size